

M2M

Machine to Machine



Internet of Things

In-Vehicle



E-Lins Technology Co.,Ltd



E-Lins Technology Co.,Ltd



Factory Inside & Factory Office Corner

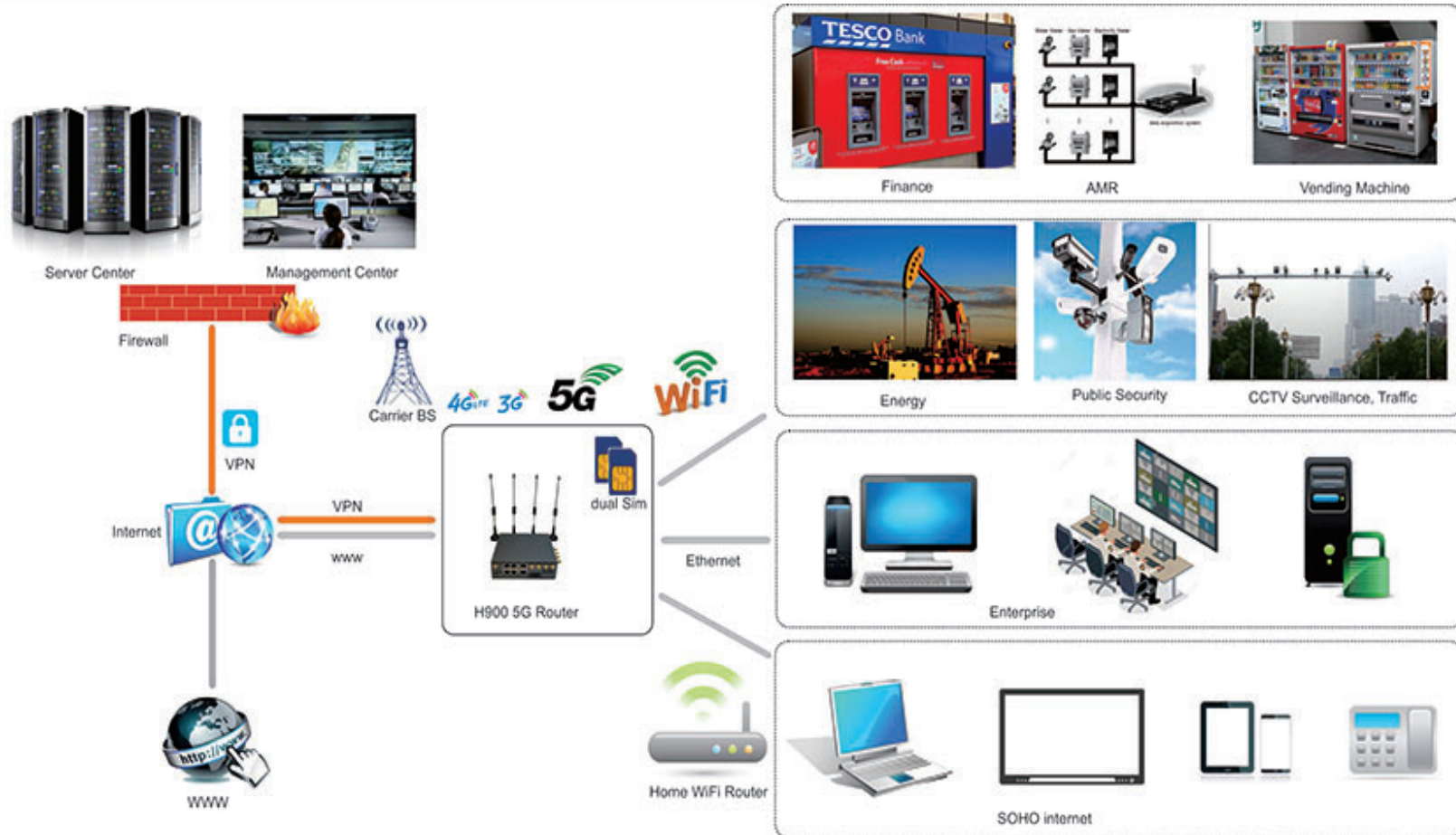


E-Lins 4G/5G Routers and Modems

Application Field for Wireless M2M and IoT

- Water, gas and oil flow metering
- Data Monitor and Control
- CCTV, DVR monitor application
- AMR (automatic meter reading)
- Power station monitoring and control
- Remote POS (point of sale) terminals
- ATM machines
- Traffic signals monitor and control
- Fleet management
- Power distribution network supervision
- Central heating system supervision
- Weather station data transmission
- Hydrologic data acquisition
- Vending machine
- Traffic info guidance
- Parking meter and Taxi Monitor
- Telecom equipment supervision (Mobile base station, microwave or optical relay station)
- Other applications

Typical Application Topology



Typical Application Topology

Failover & Bandwidth Bonding (Load Balance) Tech. for M2M / IoT



Routers and Modems

E-Lins Industrial Wireless Router & Modem for M2M / IoT / In-Vehicle

Model	Type	SIM Slot	5G	5G Redcap	4G LTE	Ethernet RJ45	USB	TF	WiFi	High Gain WiFi	Serial	GPS Beidou	DI DO	POE	DC5-60V	Others
H685	Router	1	Y	Y	Y	2	/	/	802.11b/g/n/ac/ax	/	Y	O	Y	O	O	Cute Size
H820	Router	1	/	Y	Y	5	/	/	802.11b/g/n/ac/ax	/	Y	O	/	O	O	
H820Q	Router	1	/	Y	Y	5	/	/	802.11b/g/n/ac/ax	O	Y	O	/	/	O	
H820QO	Router	2	/	Y	Y	2	/	/	802.11b/g/n/ac/ax	O	Y	O	/	O	O	IP68 Outdoor
H750	Router	2	/	Y	Y	3	/	Y	802.11b/g/n	/	Y	O	Y	/	O	
H700	Router	2	/	Y	Y	5	Y	Y	802.11b/g/n/ac	/	Y	O	Y	/	O	Gigabit Ethernet
H900	Router	2	Y	Y	Y	5	Y	/	802.11b/g/n/ac/ax	O	Y	O	Y	O	O	Gigabit Ethernet
H720	Router	2	/	Y	Y	5		/	802.11b/g/n	/	Y	O	Y	O	O	
M400	Modem	1	/	Y	Y	/	1	/	/	/	Y	O	/	/	/	
M300	Modem	1	O	Y	Y	/	1	/	/	/	/	O	/	/	O	
H685m	Modem	1 or 2	Y	Y	Y	1	Y	/	/	/	Y	O	/	O	O	Gigabit Ethernet

Y = supported

O = option

/ = Not supported

Default power input is DC-5-40V wide range

TF = MicroSD card

Serial: RS232 or RS485

DI/DO: digital input and digital output

LTE: CAT0/1/3/4/6/9/12/16/18/20

H685 Mini Size Smart 4G/5G Router



Main

Industrial class, single sim single radio module, one sim card slot; VPN(PPTP, L2TP, IPsec, GRE, OpenVPN, DMVPN, etc.), SNMP; DDNS, DHCP, NAT/NAPT, Web, Auto-dial, always online, watch-dog, POE; Cellular/WAN RJ45/WiFi Client supports failover;

Ports: RJ45 LAN * 1 + RJ45 WAN * 1 (WAN can be used as LAN to get two RJ45 LAN)
Option: DI/DO digital Input and Output port, 802.11n/ac/ax WiFi, Serial RS232/RS485, GPS/GNSS, POE, DC input 5V~60V (default is DC5V-40V)

Datasheet

Download Link : <http://www.e-lins.com/EN/download/H685-Datasheet-Eng.pdf>

Download Link : <http://www.e-lins.com/EN/download/H685-5G-Router-Datasheet-Eng.pdf>

H820 Series Smart 4G Router



Main

Industrial class, single sim single radio module, one sim card slot;
VPN(PPTP, L2TP, IPsec, GRE, OpenVPN, DMVPN, etc.), SNMP;
DDNS, DHCP, NAT/NAPT, Web, Auto-dial, always online, watch-dog;
Cellular/WAN RJ45/WiFi Client supports cold failover;

Ports: RJ45 LAN * 4 + RJ45 WAN * 1

Option: 802.11n/ac/ax WiFi, Serial RS232/RS485, GPS/GNSS,
DC input 5V~60V (default is DC5V-40V), POE

Datasheet

Download Link : <http://www.e-lins.com/EN/download/H820-Datasheet-Eng.pdf>

H820Q Smart Dual WiFi 4G Router



Main

Industrial class, single sim single radio module, one sim card slot;
VPN(PPTP, L2TP, IPsec, GRE, OpenVPN, DMVPN, etc.), SNMP;
DDNS, DHCP, NAT/NAPT, Web, Auto-dial, always online, watch-dog;
Cellular/WAN RJ45/WiFi Client supports cold failover;

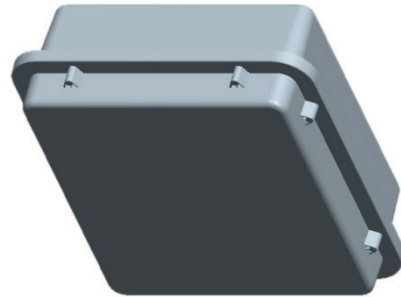
Ports: RJ45 LAN * 4 + RJ45 WAN * 1

Option: Dual Band 802.11n/ac/ax WiFi, Serial RS232/RS485, GPS/GNSS,
DC input 5V~60V (default is DC5V-40V)

Datasheet

Download Link : <http://www.e-lins.com/EN/download/H820Q-Datasheet-Eng.pdf>

H820QO Outdoor Dual SIM Dual WiFi 4G Router



Main

Industrial class, single sim single radio module, two sim card slots;
IP68 level water-proof and dust-proof;
VPN(PPTP, L2TP, IPsec, GRE, OpenVPN, DMVPN, etc.), SNMP;
DDNS, DHCP, NAT/NAPT, Web, Auto-dial, always online, watch-dog;
Cellular/WAN RJ45/WiFi Client supports cold failover;

Ports: RJ45 LAN * 1 + RJ45 WAN * 1 (WAN can be used as LAN to get two RJ45 LAN)

Option: Dual Band 802.11n/ac/ax WiFi, GPS/GNSS, DC input 5V~60V (default is DC5V-40V)

Datasheet

Download Link : <http://www.e-lins.com/EN/download/H820QO-Datasheet-Eng.pdf>

H700 Gigabit Ethernet Dual SIM Dual WiFi Router



Main

Industrial class, dual sim dual radio module, two sim card slots.
Two sim for failover redundancy (backup use), load balance;
VPN(PPTP, L2TP, IPSec, GRE, OpenVPN, DMVPN, etc.), SNMP;
DDNS, DHCP, NAT/NAPT, Web, Auto-dial, always online, watch-dog;
Cellular/WAN RJ45/WiFi Client supports cold failover;

Ports: RJ45 LAN * 4 + RJ45 WAN * 1 Gigabit Ethernet, USB, TF (MicroSD)

Option: DI/DO digital Input and Output port, 802.11AC Dual Band WiFi, Serial RS232/RS485, GPS/GNSS, DC input 5V~60V (default is DC5V-40V)

Datasheet

Download Link : <http://www.e-lins.com/EN/download/H700-Datasheet-Eng.pdf>

H900 Gigabit Ethernet Dual SIM Router



Main

Industrial class, dual sim, two sim card slots.

Two sim for failover redundancy (backup use);

VPN(PPTP, L2TP, IPSec, GRE, OpenVPN, DMVPN, etc.), SNMP;

DDNS, DHCP, NAT/NAPT, Web, Auto-dial, always online, watch-dog;

Cellular/WAN RJ45/WiFi Client supports cold failover;

Ports: RJ45 LAN * 4 + RJ45 WAN * 1, Gigabit Ethernet, USB

Option: DI/DO digital Input and Output port, 802.11n/ac/ax Dual Band or Tri Band WiFi, Serial RS232/RS485, GPS/GNSS, DC input 5V~60V (default is DC5V-40V), POE

Datasheet

Download Link : <http://www.e-lins.com/EN/download/H900-Datasheet-Eng.pdf>

<http://www.e-lins.com/EN/download/H900-5G-Router-Datasheet-Eng.pdf>

H720 Series Dual SIM Cellular Router



Main

Industrial class, dual sim dual radio module, two sim card slots.
Two sim for failover redundancy (backup use), load balance;
VPN(PPTP, L2TP, IPsec, GRE, OpenVPN, DMVPN, etc.), SNMP;
DDNS, DHCP, NAT/NAPT, Web, Auto-dial, always online, watch-dog; POE,
Cellular/WAN RJ45/WiFi Client supports cold failover;

Ports: RJ45 LAN * 4 + RJ45 WAN * 1

Option: DI/DO digital Input and Output port, WiFi, Serial RS232/RS485, GPS/GNSS,
DC input 5V~60V (default is DC5V-40V)

Datasheet

Download Link: <http://www.e-lins.com/EN/download/H720-Datasheet-Eng.pdf>

H750 Series Dual SIM Cellular Router



Main

Industrial class, dual sim dual radio module, two sim card slots.
Two sim for failover redundancy (backup use), load balance;
VPN(PPTP, L2TP, IPsec, GRE, OpenVPN, DMVPN, etc.), SNMP;
DDNS, DHCP, NAT/NAPT, Web, Auto-dial, always online, watch-dog; POE,
Cellular/WAN RJ45/WiFi Client supports cold failover;

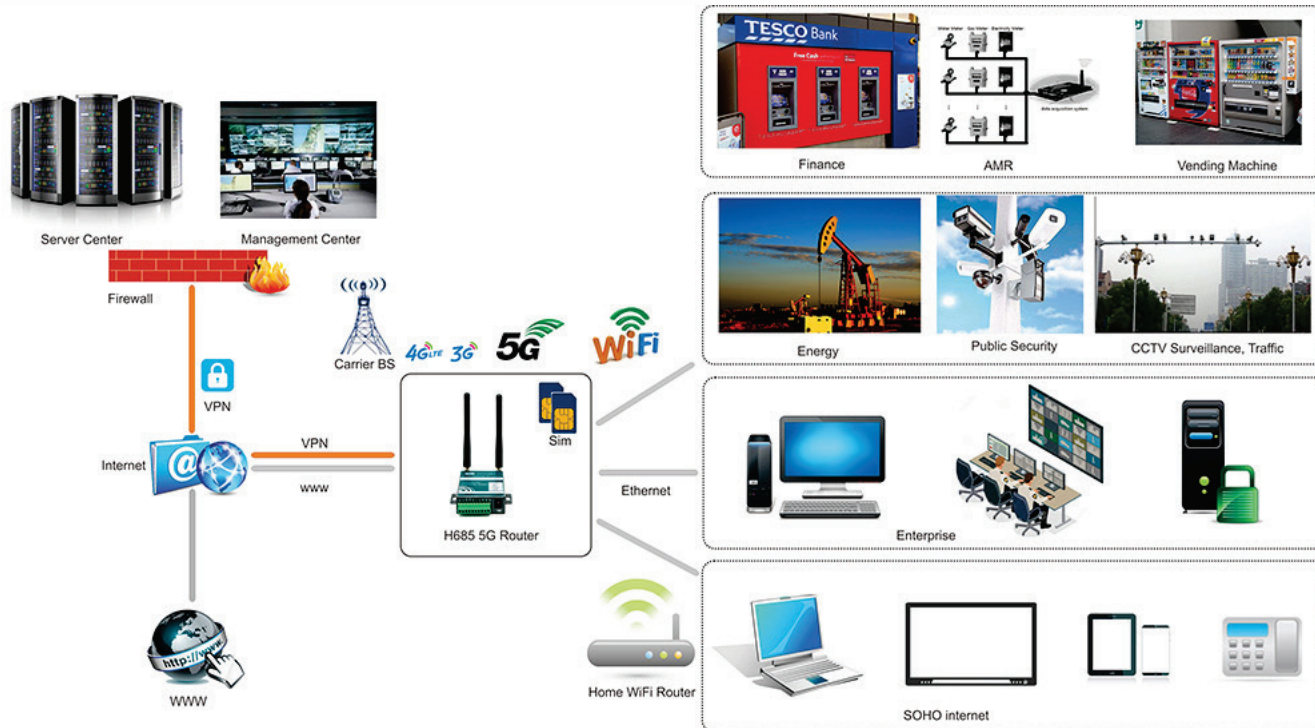
Ports: RJ45 LAN * 2 + RJ45 WAN * 1

Option: DI/DO digital Input and Output port, WiFi, RS232/RS485, GPS/GNSS,
DC input 5V~60V (default is DC5V-40V)

Datasheet

Download Link : <http://www.e-lins.com/EN/download/H750-Datasheet-Eng.pdf>

Typical Application Diagram



M300 Series Cellular Modem



Type

Industrial class, single sim single radio module, one sim card slot. USB port.

Datasheet

Link1: <http://www.e-lins.com/EN/download/M300-Datasheet-Eng.pdf>

M400 Series Cellular Modem



Type

Industrial class, single sim single radio module, one sim card slot. Serial port, or serial + USB port

Datasheet

Link1: <http://www.e-lins.com/EN/download/M400-Datasheet-Eng.pdf>

Difference between DTU Modem & Normal Modem

Item	DTU Modem (Serial to Cellular Gateway)	Normal Modem
Dial up	Support automatically dialup; Online always; trigger to dialup, schedule to dialup	Need back platform to dialup
TCP/IP, PPP	Yes	Yes
Interface	RS232/RS485	RS-232
Bandwidth	20~40Kbit/s	20~40Kbit/s
Coverage	Same as GSM network	Same as GSM network
Transparent Data	Yes	No
VDPN	Yes	Yes
Point to Point	Yes	Depends network
Point to Multipoint	Yes	No
Center to Multipoint	Yes	No
Dynamite IP Address Mapping	Yes	No
Multi-protocol	Yes	No
Applications	Utilities, traffic control, finance and industry supervision	Mobile Internet access for PC



DTU (Serial to Cellular Gateway)

Series and Models	Supported Ports	Supported Networks	Configure Method
H685 with DTU	RJ45 + RS232 / RS485 / TTL	2G / 3G / 4G LTE / 5G	GUI Web / Telnet / SSH Remote Management System
H820 with DTU	RJ45 + RS232 / RS485 / TTL	2G / 3G / 4G LTE	GUI Web / Telnet / SSH Remote Management System
H820Q with DTU	RJ45 + RS232 / RS485 / TTL	2G / 3G / 4G LTE	GUI Web / Telnet / SSH Remote Management System
H700 with DTU	RJ45 + RS232 / RS485 / TTL	2G / 3G / 4G LTE	GUI Web / Telnet / SSH Remote Management System
H750 with DTU	RJ45 + RS232 / RS485 / TTL	2G / 3G / 4G LTE	GUI Web / Telnet / SSH Remote Management System
H720 with DTU	RJ45 + RS232 / RS485 / TTL	2G / 3G / 4G LTE	GUI Web / Telnet / SSH Remote Management System
H900 with DTU	RJ45 + RS232 / RS485 / TTL	2G / 3G / 4G LTE / 5G	GUI Web / Telnet / SSH Remote Management System

